

Furzefield Manor

BEACONSFIELD • BUCKINGHAMSHIRE • HP9 1PQ

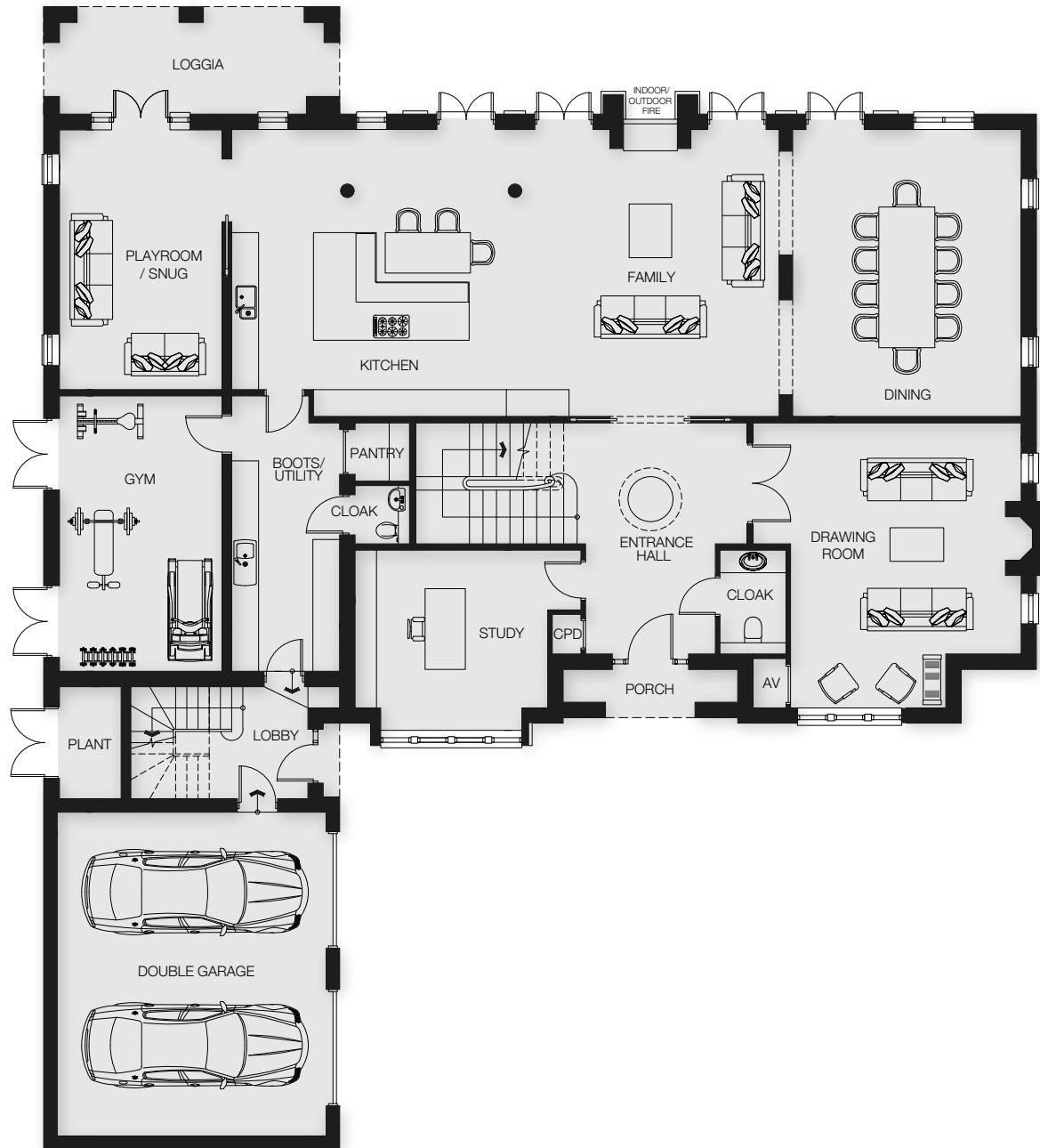
Coming soon

An incredible opportunity to construct one of the area's most outstanding homes with the benefit of considerable tax relief, subject to confirmation.
Located just 0.3 miles from Beaconsfield New Town high street and railway station. This unique family home provides over 7,000 sq ft of meticulously designed accommodation, set in a level half acre plot.

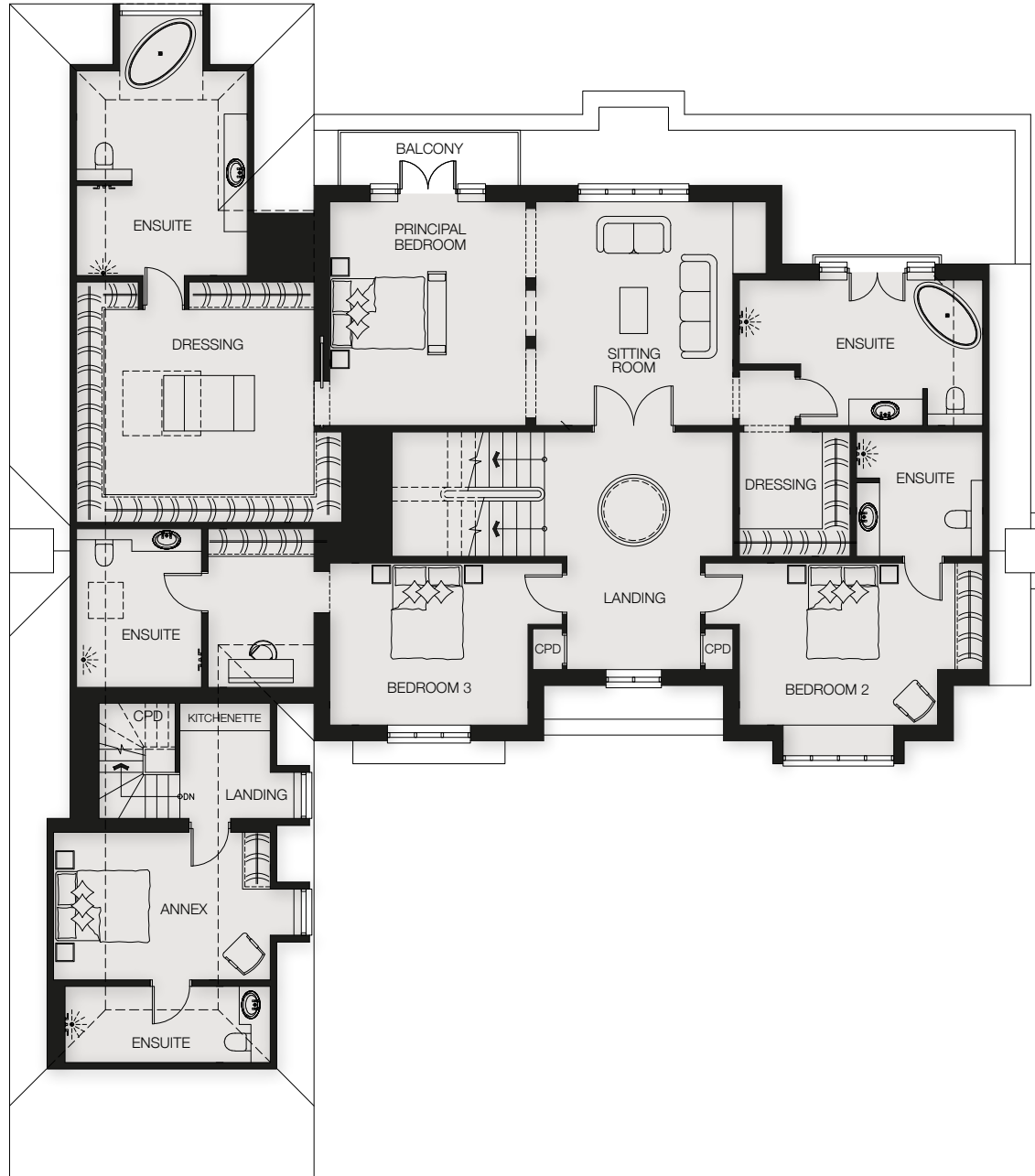




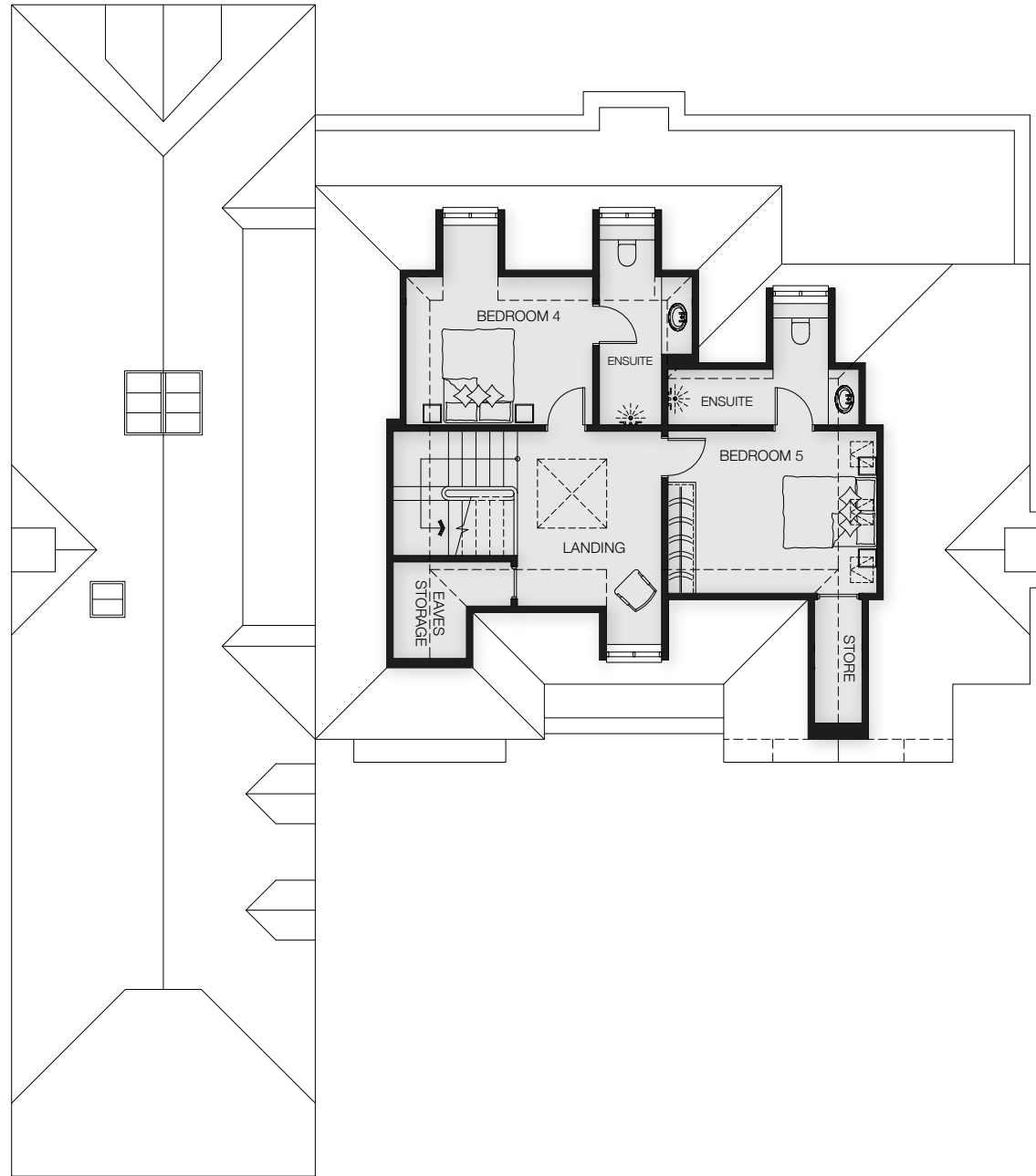




GROUND FLOOR



FIRST FLOOR



SECOND FLOOR

Location



Map not to scale – indicative only.

Set within South Buckinghamshire, Beaconsfield is regarded as a highly desirable commuter town, within 20 minutes of London Heathrow, yet surrounded by picturesque and scenic countryside. Beaconsfield lies close to the intersection of the M25 and the M40, giving the town excellent motorway links, while the A40 provides direct access to central London. Beaconsfield train station offers a journey time to London Marylebone from approximately 24 minutes*.

The area is renowned for its excellent education system, offering a wide range of leading state, independent and grammar schools.

Beaconsfield New Town centre is located just a 1 minute walk away**, providing a range of independent businesses, cafés, restaurants, supermarkets, gastro pubs and lively bars. Surrounding leisure facilities include Ascot Racecourse, Cliveden House, Black Park, Burnham Beeches, Windsor Great Park and Beaconsfield Golf Club.

*Time based on nationalrail.co.uk. **Distance based on Google Maps.



+44 1753 926044 • hregroup.co.uk • info@hregroup.co.uk